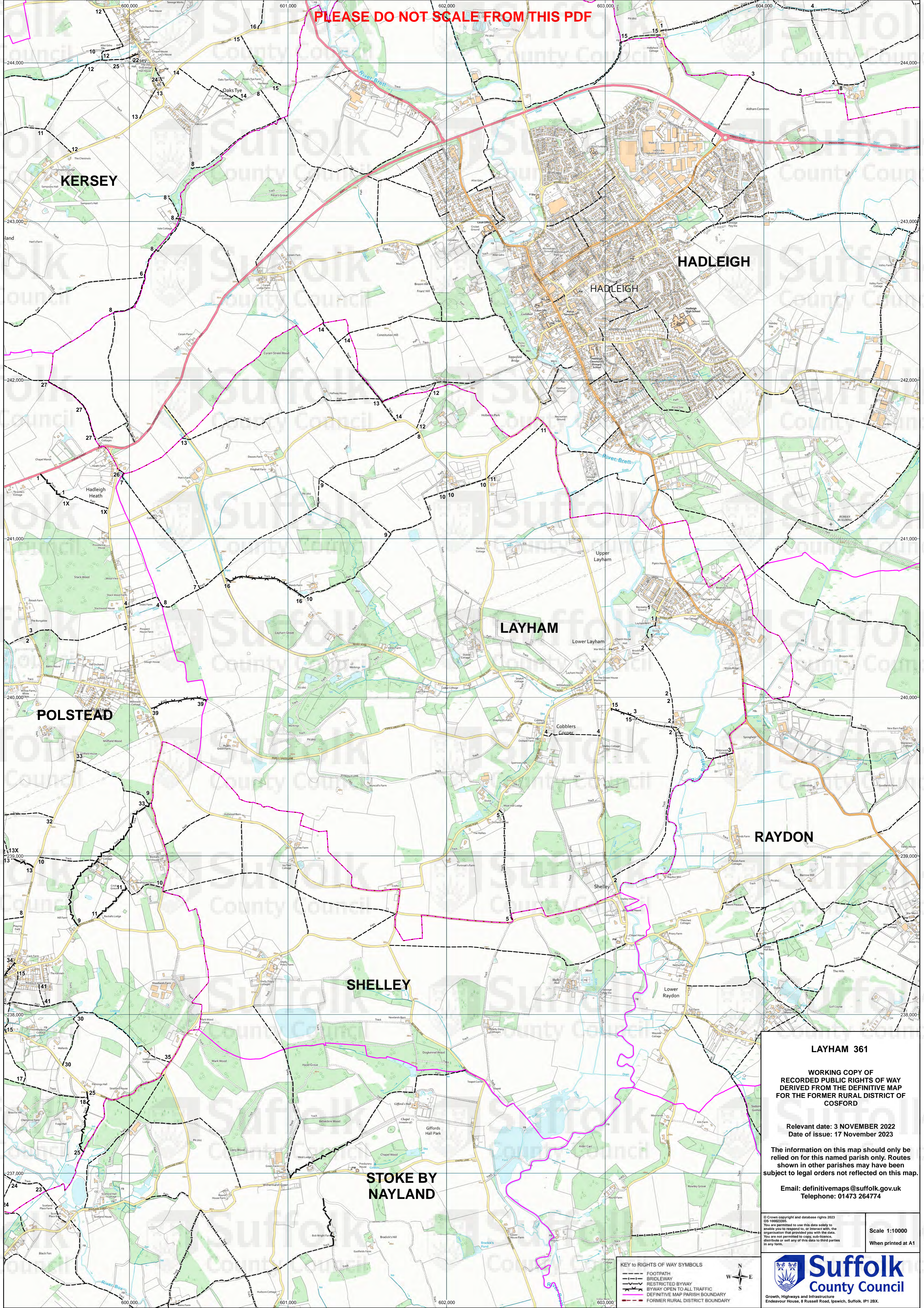


PLEASE DO NOT SCALE FROM THIS PDF



**LAYHAM 361**

**WORKING COPY OF  
RECORDED PUBLIC RIGHTS OF WAY  
DERIVED FROM THE DEFINITIVE MAP  
FOR THE FORMER RURAL DISTRICT OF  
COSFORD**

Relevant date: 3 NOVEMBER 2022  
Date of issue: 17 November 2023

The information on this named parish only. Routes shown in other parishes may have been subject to legal orders not reflected on this map.

Email: [definitivemaps@suffolk.gov.uk](mailto:definitivemaps@suffolk.gov.uk)  
Telephone: 01473 264774

© Crown copyright and database rights 2023  
OS 100022295.  
You are permitted to use this data solely to enable you to respond to, or interact with, the organisation that provided you with the data.  
You are not permitted to copy, sub-licence, distribute or sell any of this data to third parties in any form.

Scale 1:10000  
When printed at A1

- KEY TO RIGHTS OF WAY SYMBOLS**
- FOOTPATH
  - BRIDLEWAY
  - RESTRICTED BYWAY
  - BYWAY OPEN TO ALL TRAFFIC
  - DEFINITIVE MAP PARISH BOUNDARY
  - FORMER RURAL DISTRICT BOUNDARY



Growth, Highways and Infrastructure  
Endeavour House, 8 Russell Road, Ipswich, Suffolk, IP1 2BX.