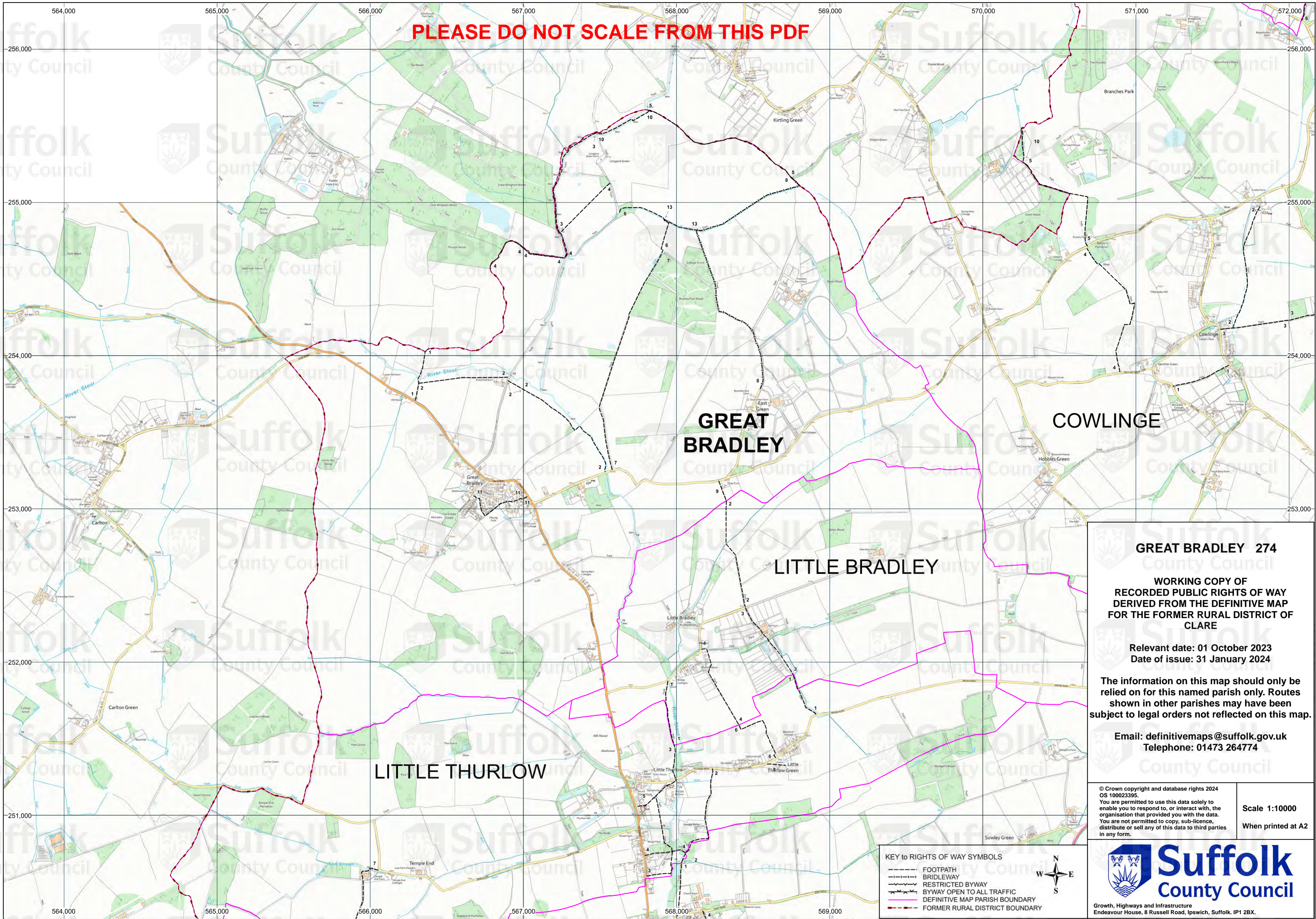


PLEASE DO NOT SCALE FROM THIS PDF



GREAT BRADLEY 274

**WORKING COPY OF
RECORDED PUBLIC RIGHTS OF WAY
DERIVED FROM THE DEFINITIVE MAP
FOR THE FORMER RURAL DISTRICT OF
CLARE**

Relevant date: 01 October 2023
Date of issue: 31 January 2024

The information on this map should only be
relied on for this named parish only. Routes
shown in other parishes may have been
subject to legal orders not reflected on this map.

Email: definitivemaps@suffolk.gov.uk
Telephone: 01473 264774

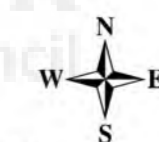
© Crown copyright and database rights 2024
OS 100023395.
You are permitted to use this data solely to
enable you to respond to, or interact with, the
organisation that provided you with the data.
You are not permitted to copy, sub-licence,
distribute or sell any of this data to third parties
in any form.

Scale 1:10000

When printed at A2

KEY to RIGHTS OF WAY SYMBOLS

- FOOTPATH
- ... BRIDLEWAY
- RESTRICTED BYWAY
- BYWAY OPEN TO ALL TRAFFIC
- DEFINITIVE MAP PARISH BOUNDARY
- - - FORMER RURAL DISTRICT BOUNDARY



Growth, Highways and Infrastructure
Endeavour House, 8 Russell Road, Ipswich, Suffolk. IP1 2BX.